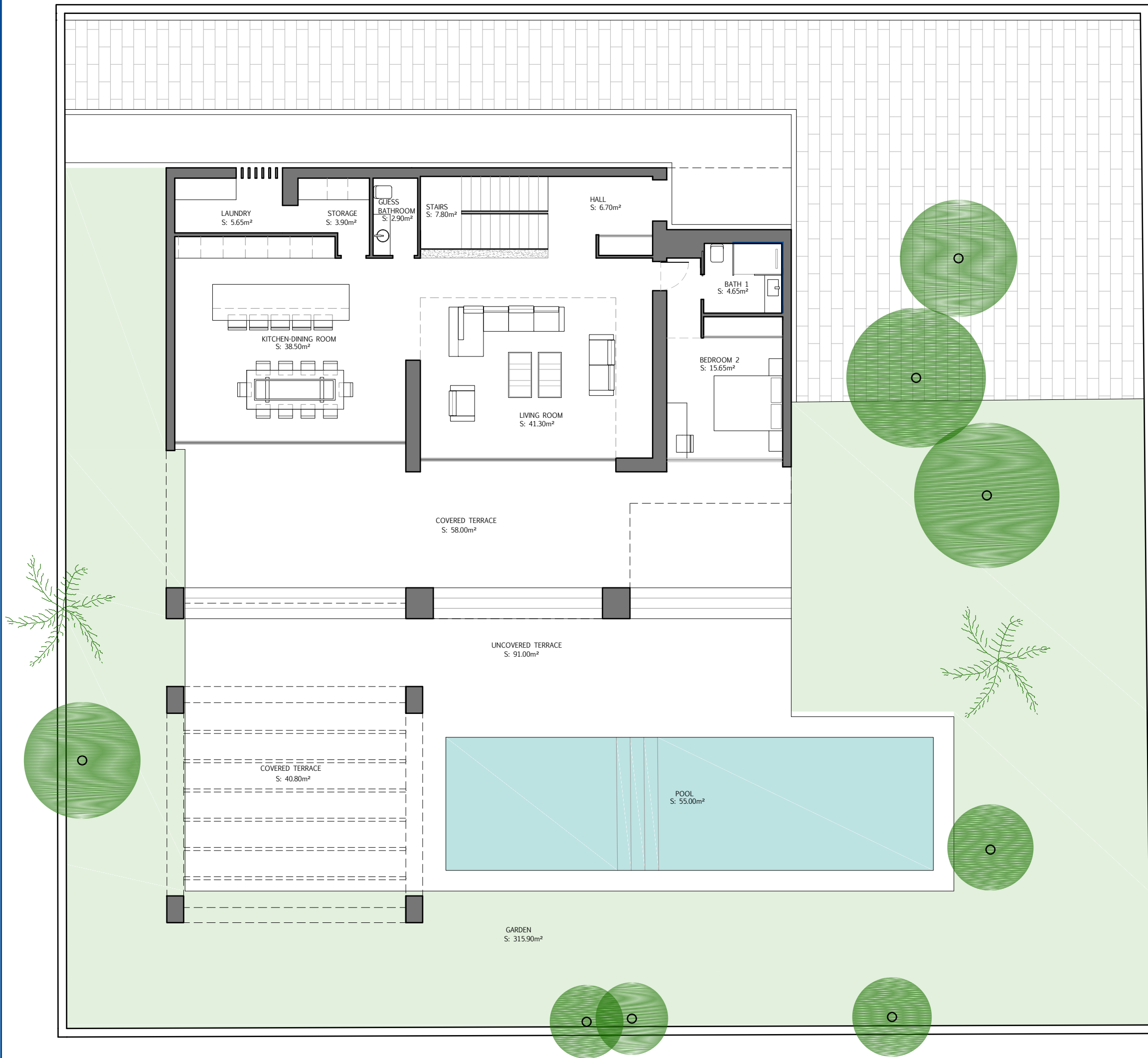


# MAREIN BANUS

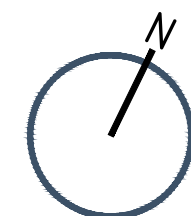
## VILLA 3. GROUND FLOOR

24/07/2020



### BUILT SURFACES

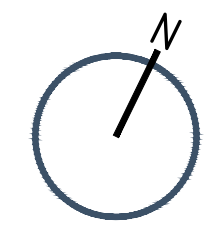
Ground Floor	149.75m <sup>2</sup>
Terrace	192.80m <sup>2</sup>
Pool	55.00m <sup>2</sup>
<b>TOTAL</b>	<b>397.55m<sup>2</sup></b>



# MAREIN BANUS

VILLA 3. 1ST FLOOR

24/07/2020



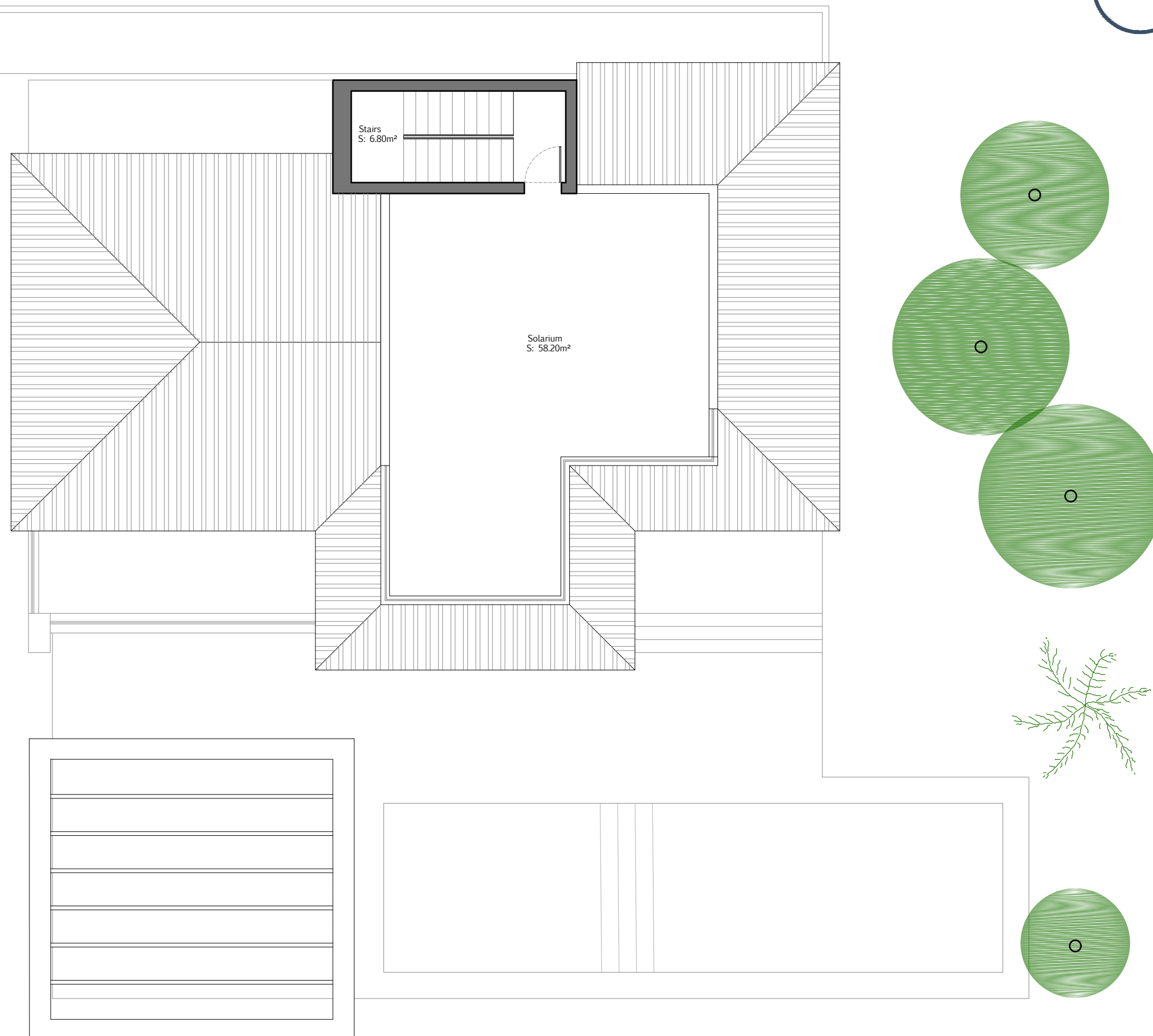
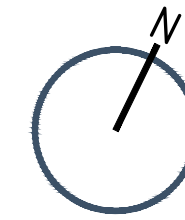
## BUILT SURFACES

1st Floor	119.10m <sup>2</sup>
Terrace	26.40m <sup>2</sup>
<b>TOTAL</b>	<b>145.50m<sup>2</sup></b>

# MAREIN BANUS

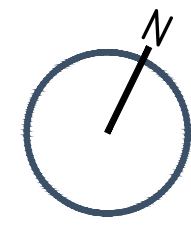
VILLA 3. SOLARIUM

24/07/2020



## BUILT SURFACES

Stairs	14.55m <sup>2</sup>
Solarium	62.64m <sup>2</sup>
TOTAL	77.19m <sup>2</sup>



**BASEMENT**

BUILT S.: 215.75m<sup>2</sup>  
USEFUL S.: 195.55m<sup>2</sup>

**BUILT SURFACES**

Basement	215.75m <sup>2</sup>
<b>TOTAL</b>	<b>215.75m<sup>2</sup></b>

