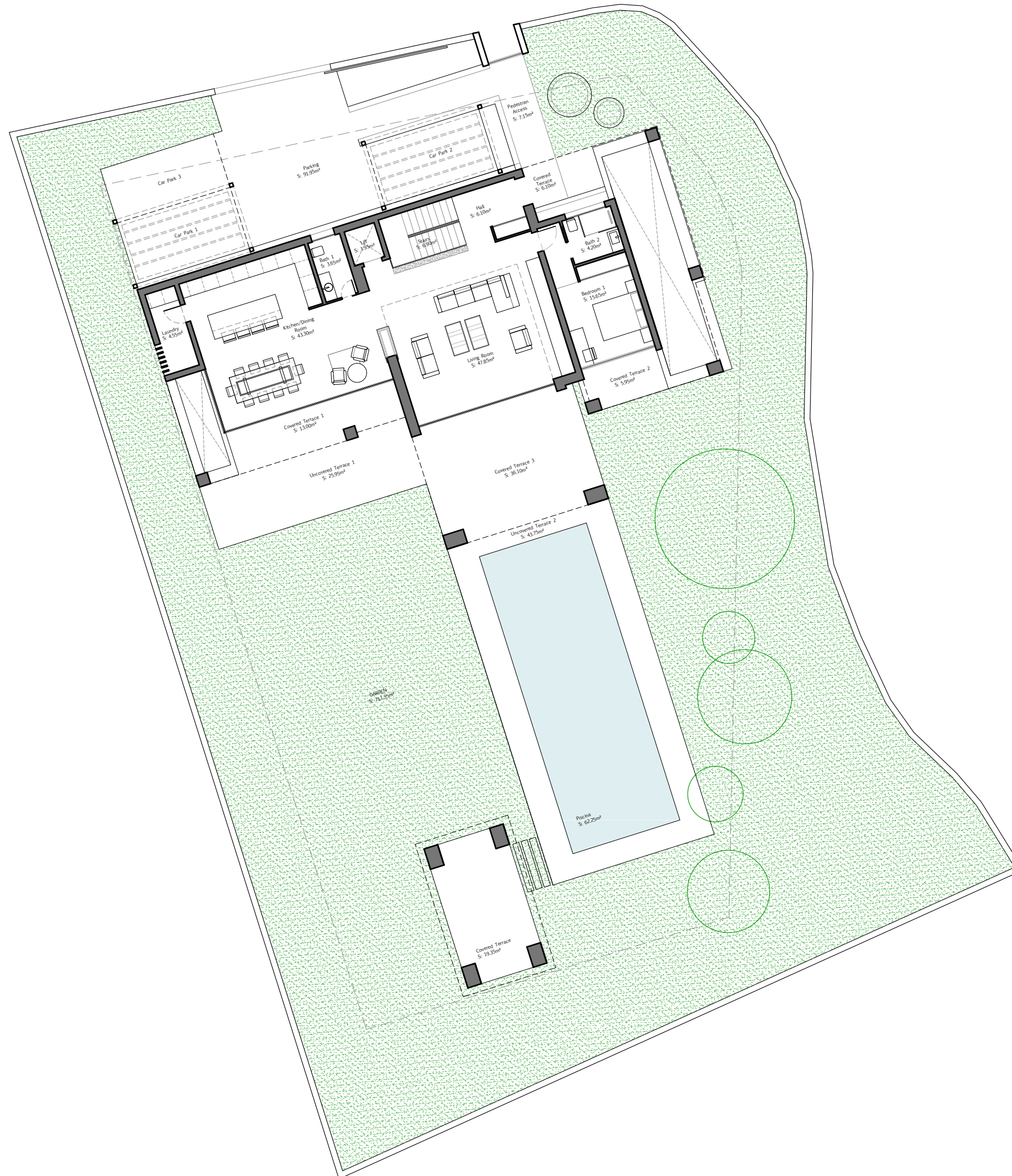


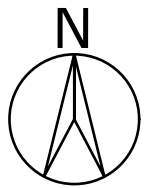
VILLA ATALAYA BANUS

PLOT 1.251,60m²



BUILT SURFACES

Basement	245.30m ²
Ground Floor	350.00m ²
First Floor	184.25m ²
Solarium	115.15m ²
TOTAL	894.70m²



EXCLUSIVE
AGENCY



DEVELOPER

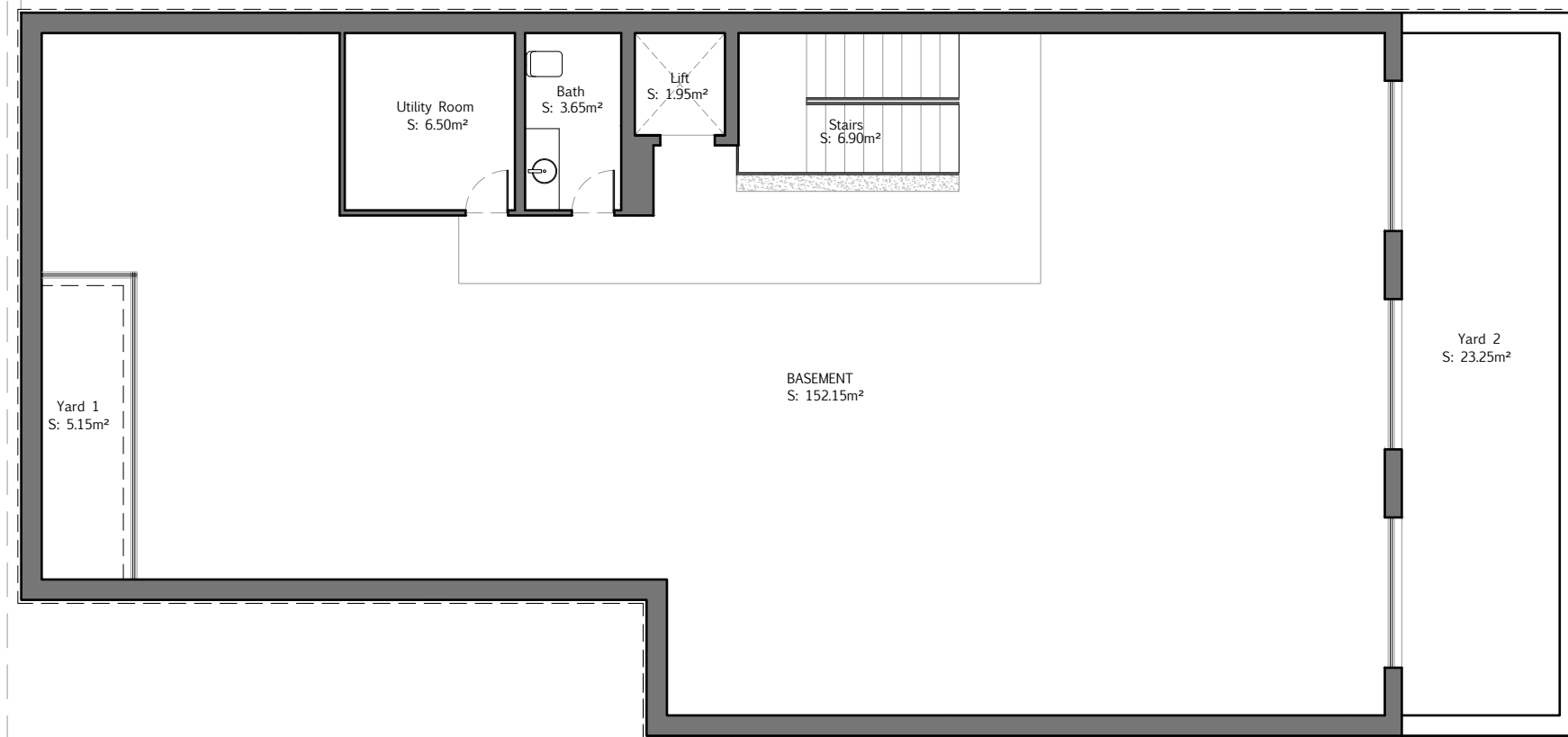
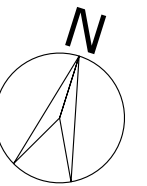


VILLA ATALAYA BANUS

BASEMENT

BUILT SURFACES

Basement	190.30m ²
Backyards	55.00m ²
TOTAL	245.30m²



EXCLUSIVE
AGENCY

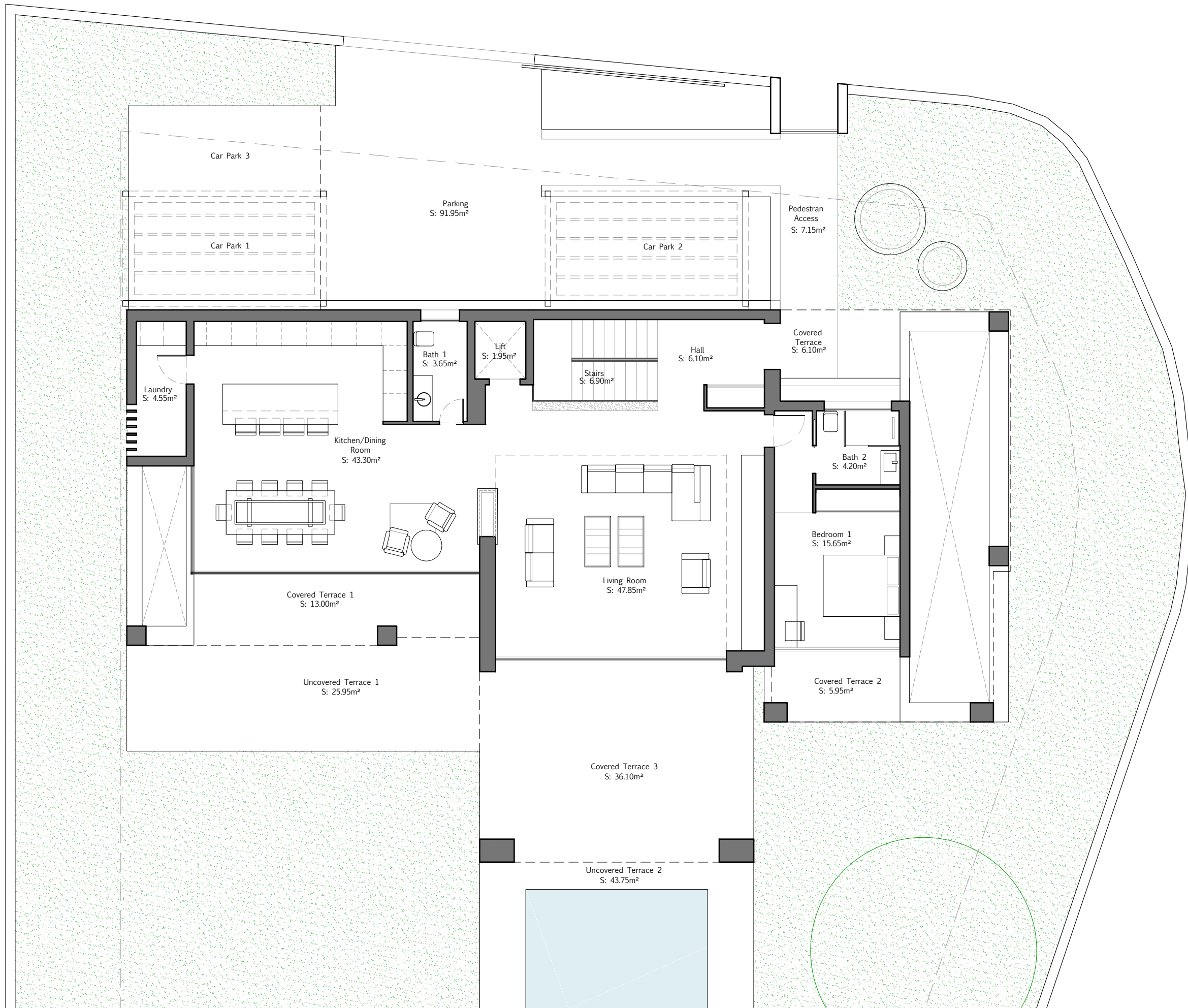


DEVELOPER



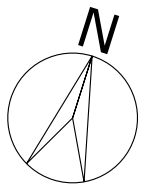
VILLA ATALAYA BANUS

GROUND FLOOR



BUILT SURFACES

Ground Floor	154.60m ²
Terrace	133.15m ²
Pool	62.25m ²
TOTAL	350.00m²



EXCLUSIVE
AGENCY



DEVELOPER

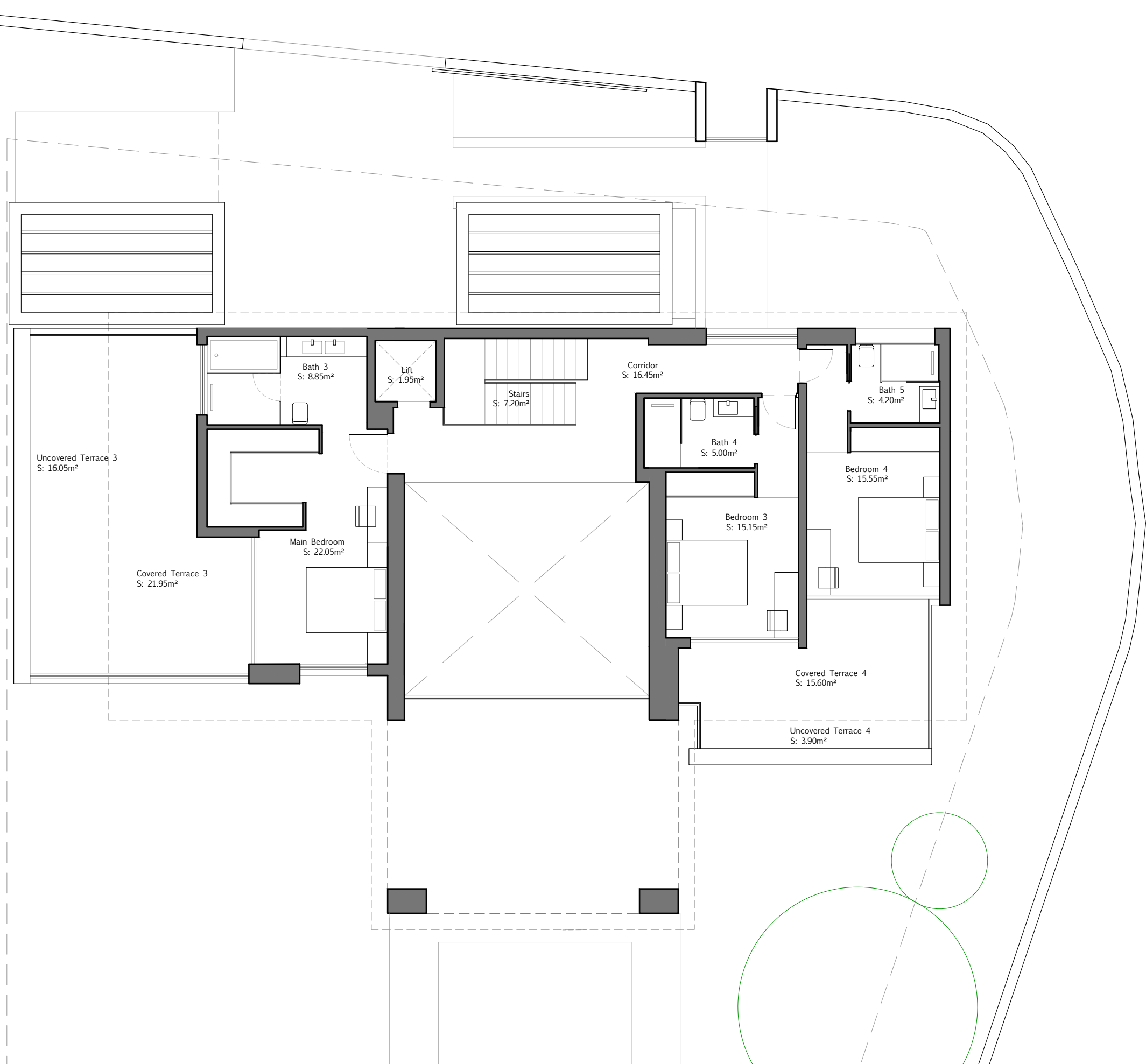
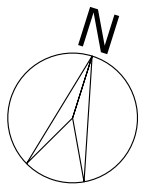


VILLA ATALAYA BANUS

FIRST FLOOR

BUILT SURFACES

First Floor	118.00m ²
Terrace	66.25m ²
TOTAL	184.25m²



EXCLUSIVE
AGENCY



DEVELOPER

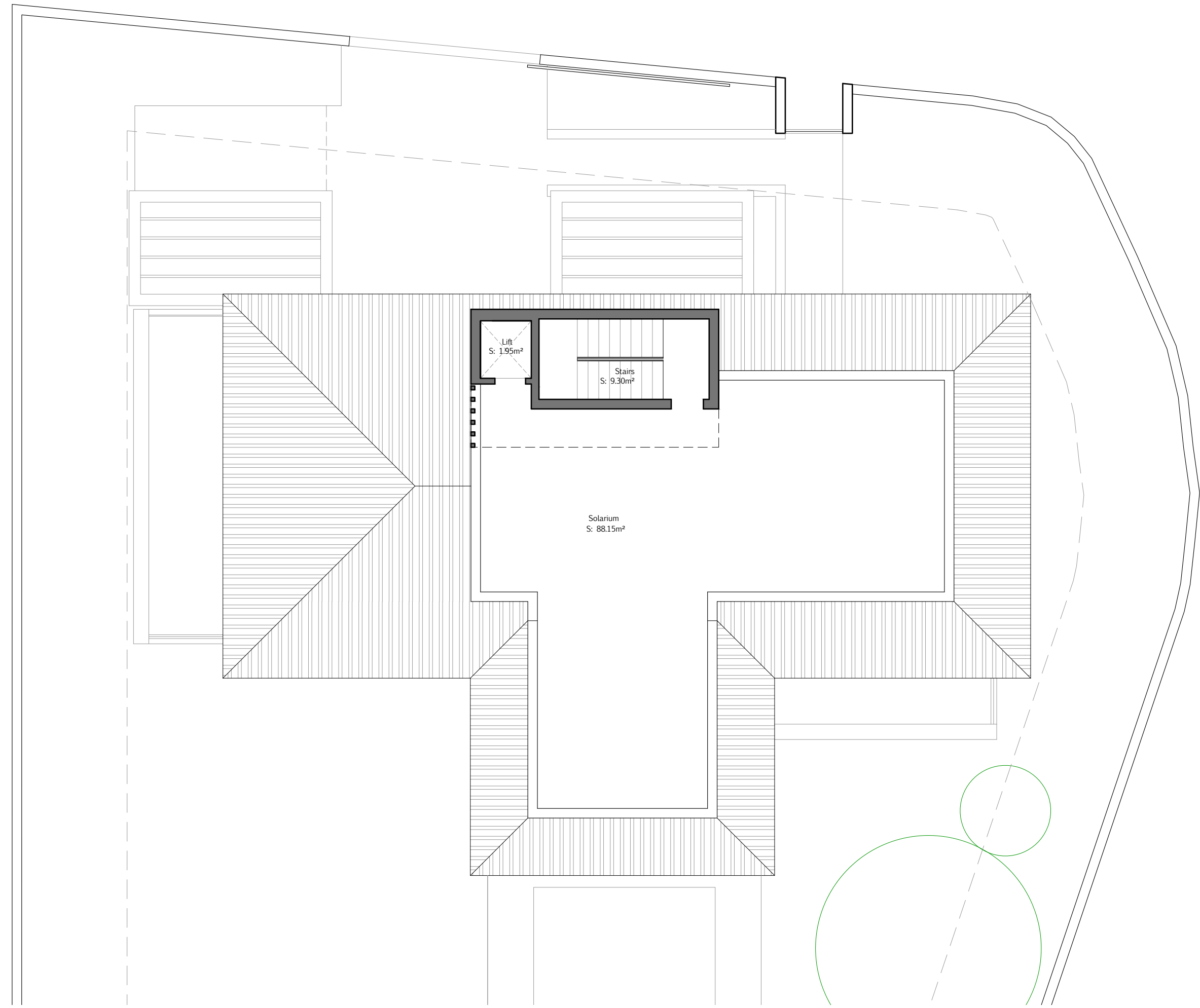
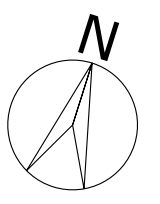


VILLA ATALAYA BANUS

SOLARIUM

BUILT SURFACES

Stairs	15.75m ²
Solarium	99.40m ²
TOTAL	115.15m²



EXCLUSIVE
AGENCY



DEVELOPER

