



OASIS 22

by MAREIN

DETACHED 13

PLOT 516,43

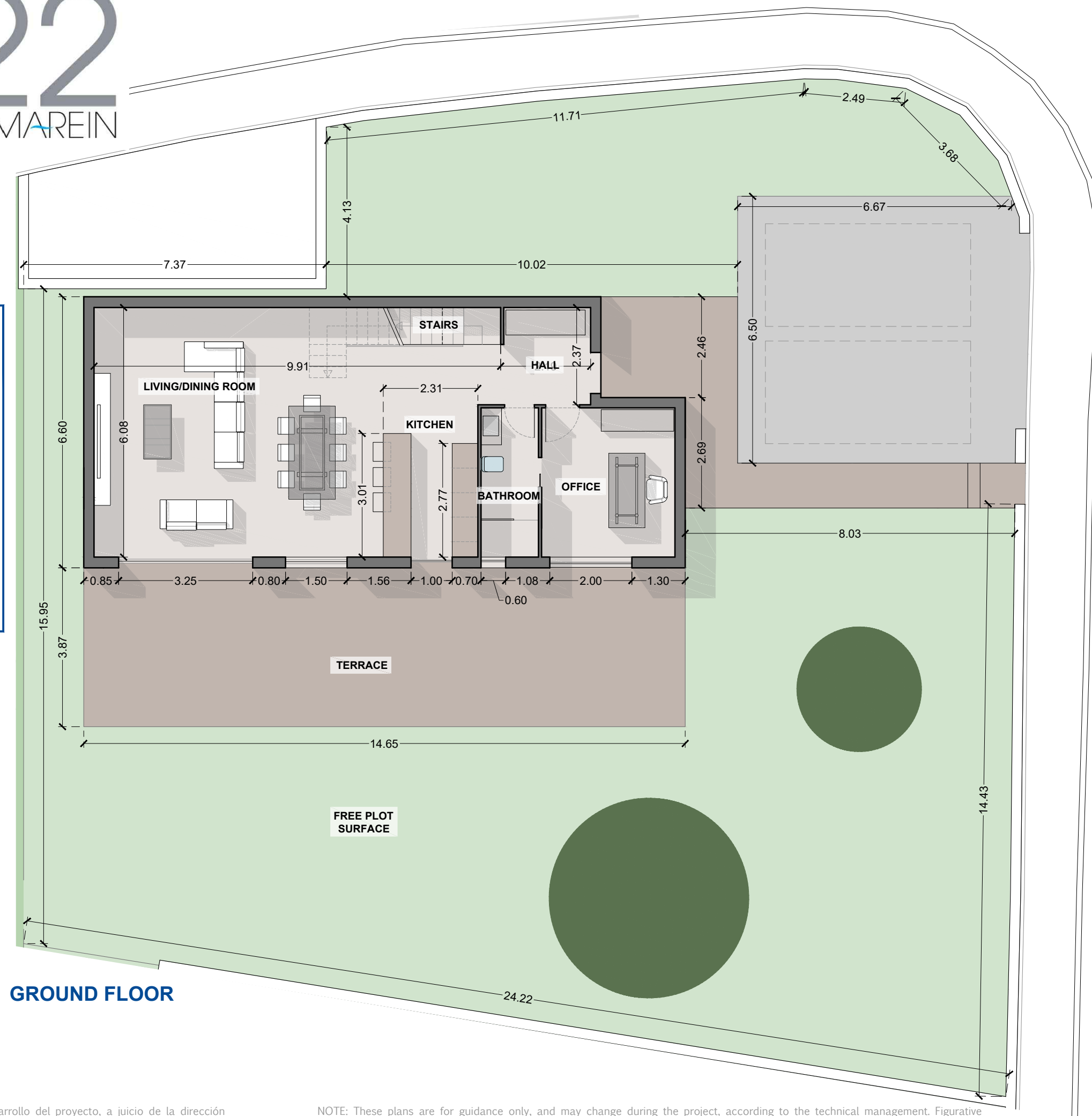
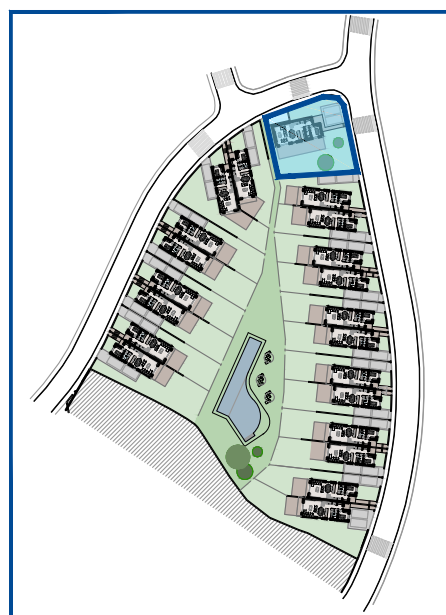
GROUND FLOOR

HALL	5,20m ²
LIVING/DINING ROOM	47,35m ²
KITCHEN	8,35m ²
OFFICE	11,80m ²
BATHROOM	5,05m ²
STAIRS	4,90m ²
USEFULL SURFACE	82,65m²
BUILT SURFACE	91,72m²
TERRACE	56,70m ²

FREE PLOT SURFACE 294,46m²

FIRST FLOOR

CORRIDOR	3,20m ²
MASTER BEDROOM	22,75m ²
BEDROOM 2	16,45m ²
BEDROOM 3	15,55m ²
BATHROOM 2	6,60m ²
BATHROOM 3	4,20m ²
USEFULL SURFACE	68,75m²
BUILT SURFACE	84,42m²
TERRACE	25,85m ²



GROUND FLOOR

NOTA: Estos planos son orientativos, pudiendo sufrir modificaciones durante el desarrollo del proyecto, a juicio de la dirección técnica y de los organismos competentes. El mobiliario es figurativo no vinculante.

NOTE: These plans are for guidance only, and may change during the project, according to the technical management. Figurative furniture is not binding.



OASIS 22

by MAREIN

DETACHED 13

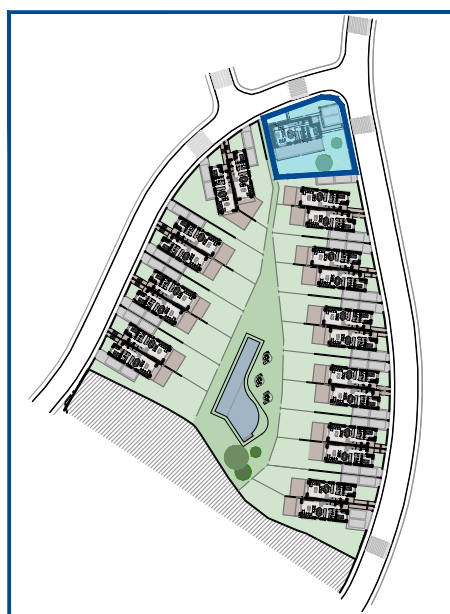
PLOT 516,43

GROUND FLOOR

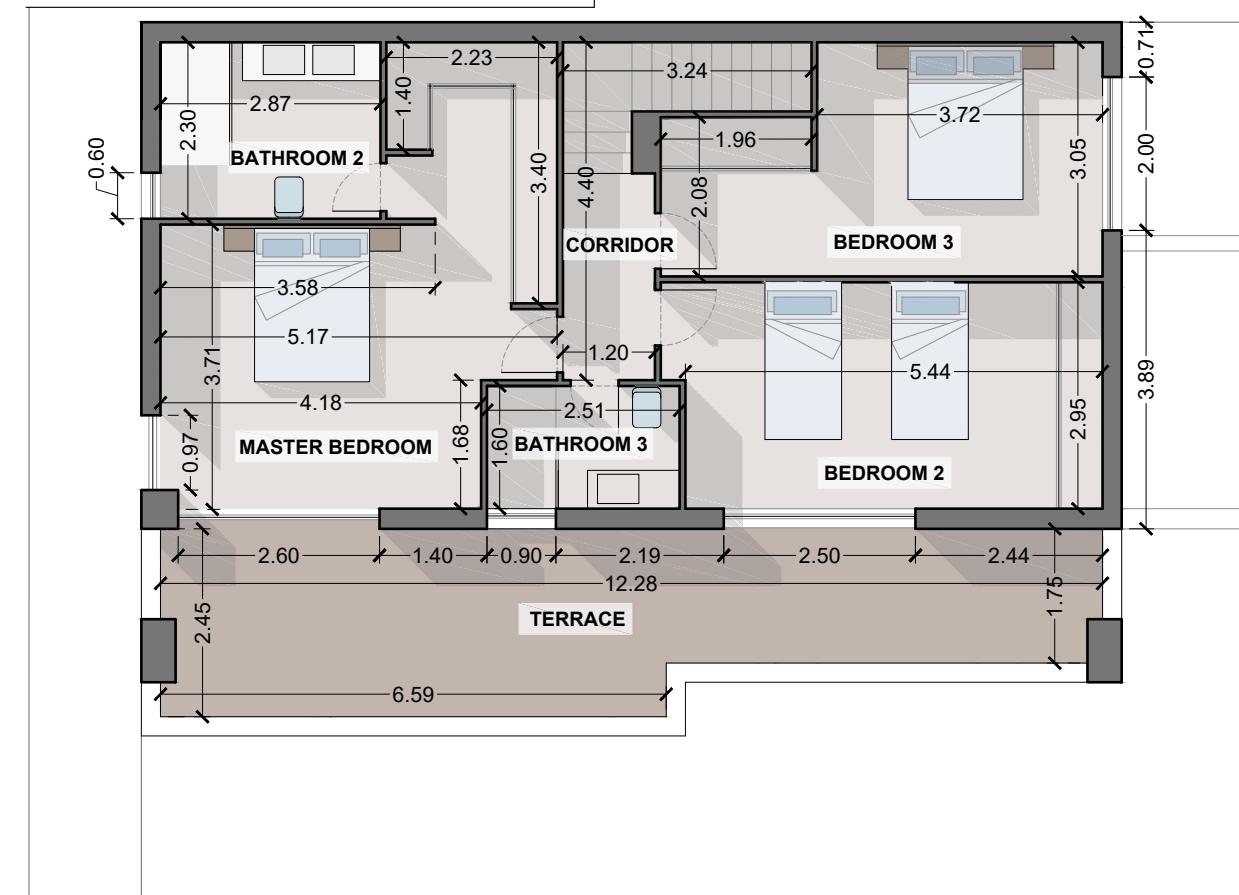
HALL	5,20m ²
LIVING/DINING ROOM	47,35m ²
KITCHEN	8,35m ²
OFFICE	11,80m ²
BATHROOM	5,05m ²
STAIRS	4,90m ²
USEFULL SURFACE	82,65m²
BUILT SURFACE	91,72m²
TERRACE	56,70m ²

FIRST FLOOR

CORRIDOR	3,20m ²
MASTER BEDROOM	22,75m ²
BEDROOM 2	16,45m ²
BEDROOM 3	15,55m ²
BATHROOM 2	6,60m ²
BATHROOM 3	4,20m ²
USEFULL SURFACE	68,75m²
BUILT SURFACE	84,42m²
TERRACE	25,85m ²

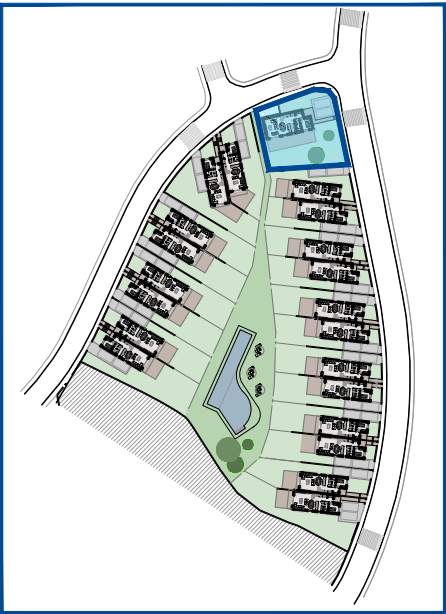


FIRST FLOOR



NOTA: Estos planos son orientativos, pudiendo sufrir modificaciones durante el desarrollo del proyecto, a juicio de la dirección técnica y de los organismos competentes. El mobiliario es figurativo no vinculante.

NOTE: These plans are for guidance only, and may change during the project, according to the technical management. Figurative furniture is not binding.



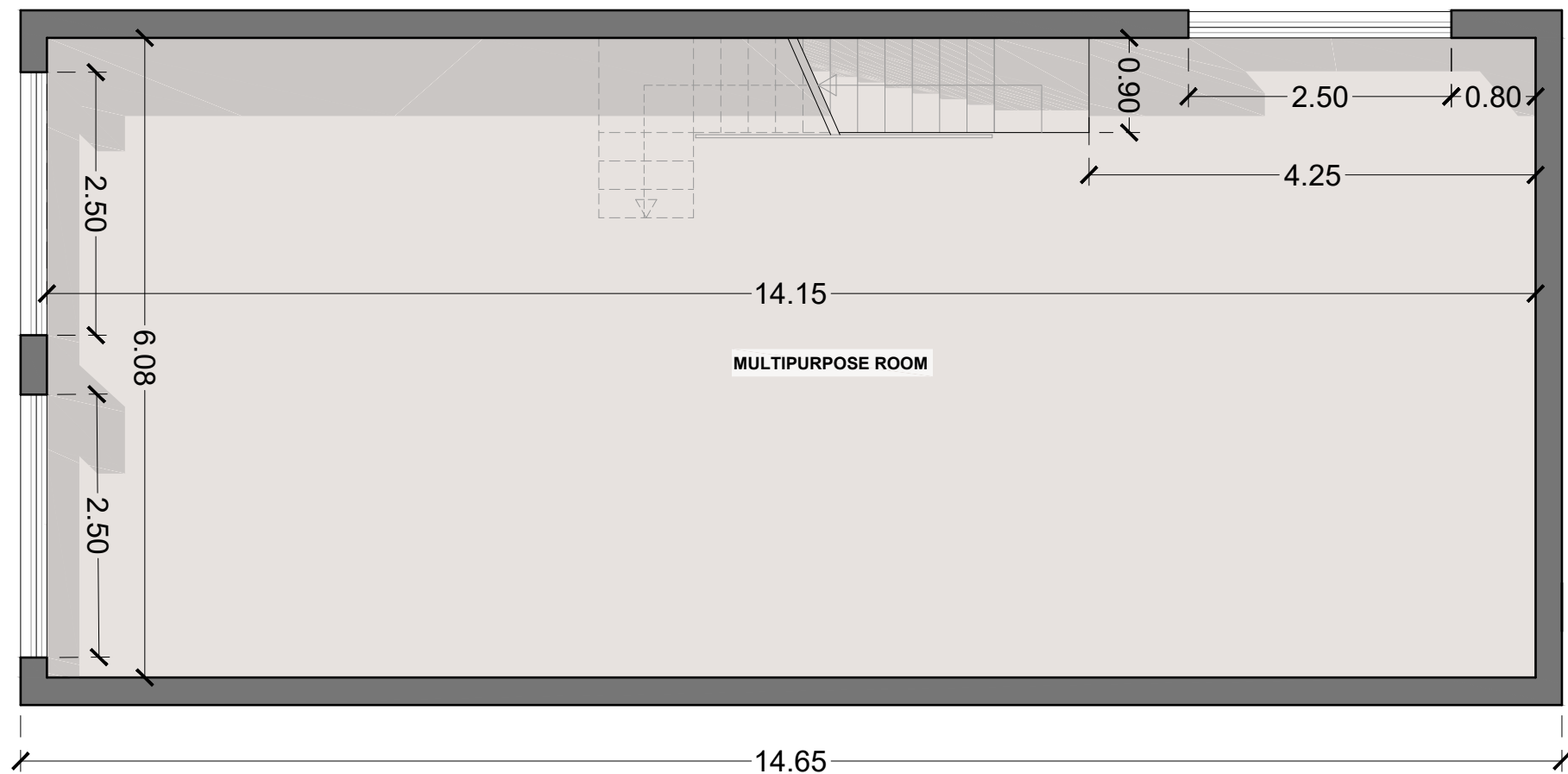
DETACHED 13 **PLOT 516,43**

BASEMENT

MULTIPURPOSE ROOM 86,05m²

USEFULL SURFACE 86,05m²

BUILT SURFACE 96,77m²



BASEMENT

NOTA: Estos planos son orientativos, pudiendo sufrir modificaciones durante el desarrollo del proyecto, a juicio de la dirección técnica y de los organismos competentes. El mobiliario es figurativo no vinculante.

NOTE: These plans are for guidance only, and may change during the project, according to the technical management. Figurative furniture is not binding.